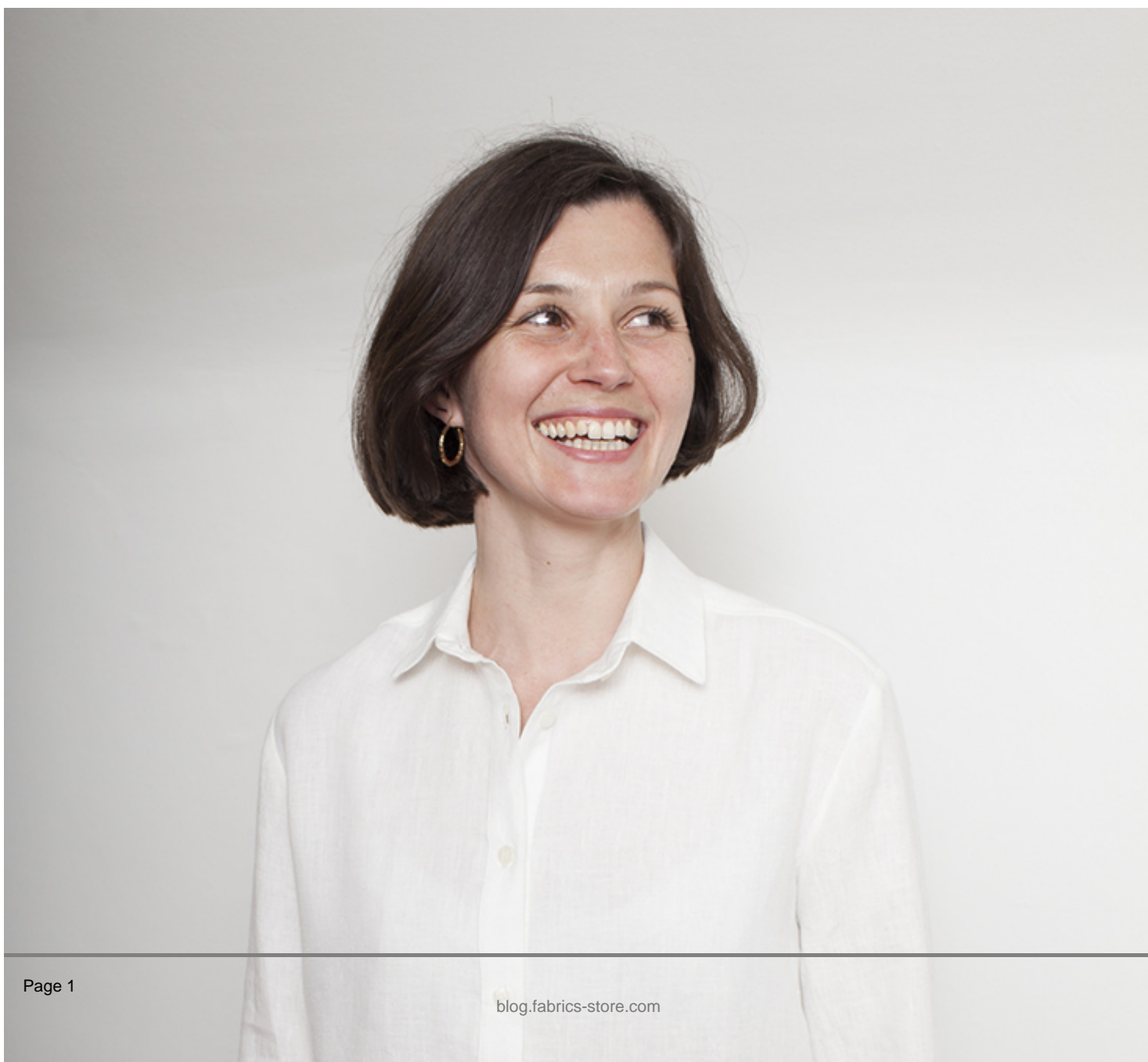


Noa Linen Shirt Tutorial and Free Pattern

Description







Channeling the minimalist spirit of a modern woman, the Noa shirt is a modern classic. This simple shirt combines relaxed silhouette with classic tailored styling, like a point collar, sleeve cuffs and a back yoke. One of the most foundational and versatile pieces of any wardrobe, it can be dressed up or down so easily and pairs really well with just about anything. Made out of our finest linen, it'll get softer and softer with every wash.

Sharpen your sewing skills and make a worthwhile addition to your handmade wardrobe!

Materials



2 yards of [IL019 BLEACHED FS Signature Finish Medium Weight Linen](#)

Matching sewing thread, medium weight fusible interfacing, 9 buttons (3/8"-1/2" wide)

Tools



Scissors, pins, ruler, seam ripper, fabric marker, chalk, buttonhole foot, measure tape, needle, sewing machine

Difficulty

Intermediate

Sewing Time

5-6 hours

Pattern

You can access the multi-sized printable PDF pattern by following this link [HERE](#). All seam allowances are included. The model is wearing size US size

6.

Remember to transfer all the notches onto your fabric.

Steps

Note: Prewash your fabric and tumble dry it until it is still slightly moist, dry at room temperature. Iron the fabric so it is easier to work with.

As always, we start with the button bands.

1. Follow [our detailed tutorial](#) and complete the button bands. Remember that in women's shirts the buttonholes are placed on the right and the buttons – on the left. So make sure that the left side of your front pattern (the wider one) is folded twice towards the wrong side, whereas the right side is finished with a separate button band.



Remember to interface the button bands for more structure and support. Do not sew the buttonholes and attach the buttons yet, we'll do it at the very end of our tutorial.

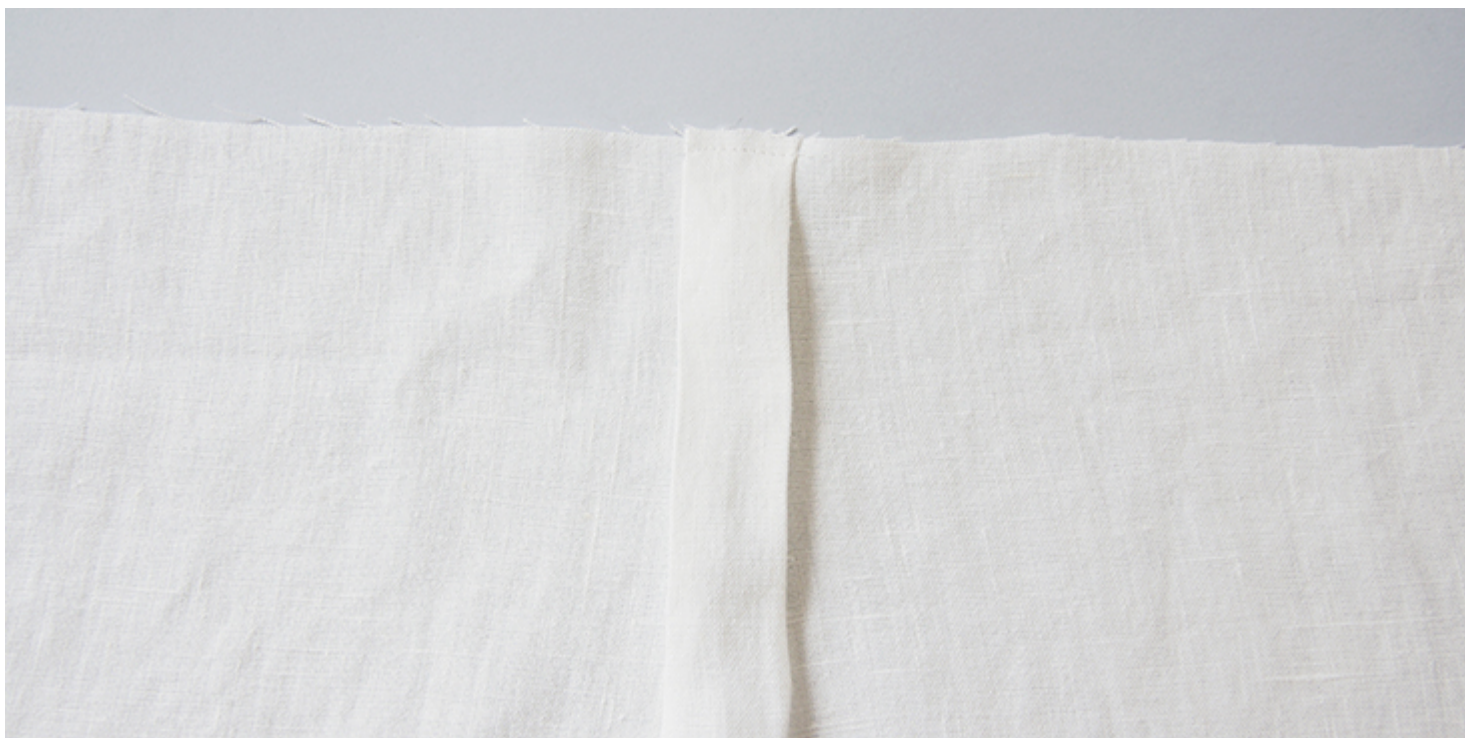
2. Usually, the bottom hem is the last thing you sew. But since this shirt's hem is rather curvy, we'll sew the hem now and assemble the shoulder/side seams after. Finish the bottom hem using the great technique for curvy edges explained [in this tutorial](#).



Now that the preparation is over, we can finally assemble the back and the fronts of the shirt with a yoke.

3. You'll find the detailed instructions on how to attach the yoke in [this step-by-step tutorial](#).

First create a 1-wide box pleat:



Then attach the yokes to the lower back:



Run a line of topstitching $\frac{1}{8}$ from the seamline:



Attach the shoulder seams:





4. Time to sew and attach the collar. You'll find the step-by-step instructions in [this tutorial](#).





Next up – the sleeves!

5. Before attaching the sleeves, sew the continuous bound plackets on each sleeve following [this tutorial](#) (steps 1-11).



6. Working from the right side, form two pleats at cuff edge following the arrows printed on the pattern. Baste the pleats and the front placket (turned to the underside) in place 1/4 from the edge.



7. The sleeves have a little bit of ease around the shoulder area. Run two lines of basting stitches on each sleeve cap, 1/2 away from back armhole notch to 1/2 from front armhole notch. If you don't know how to gather, please check our detailed tutorial [HERE](#).



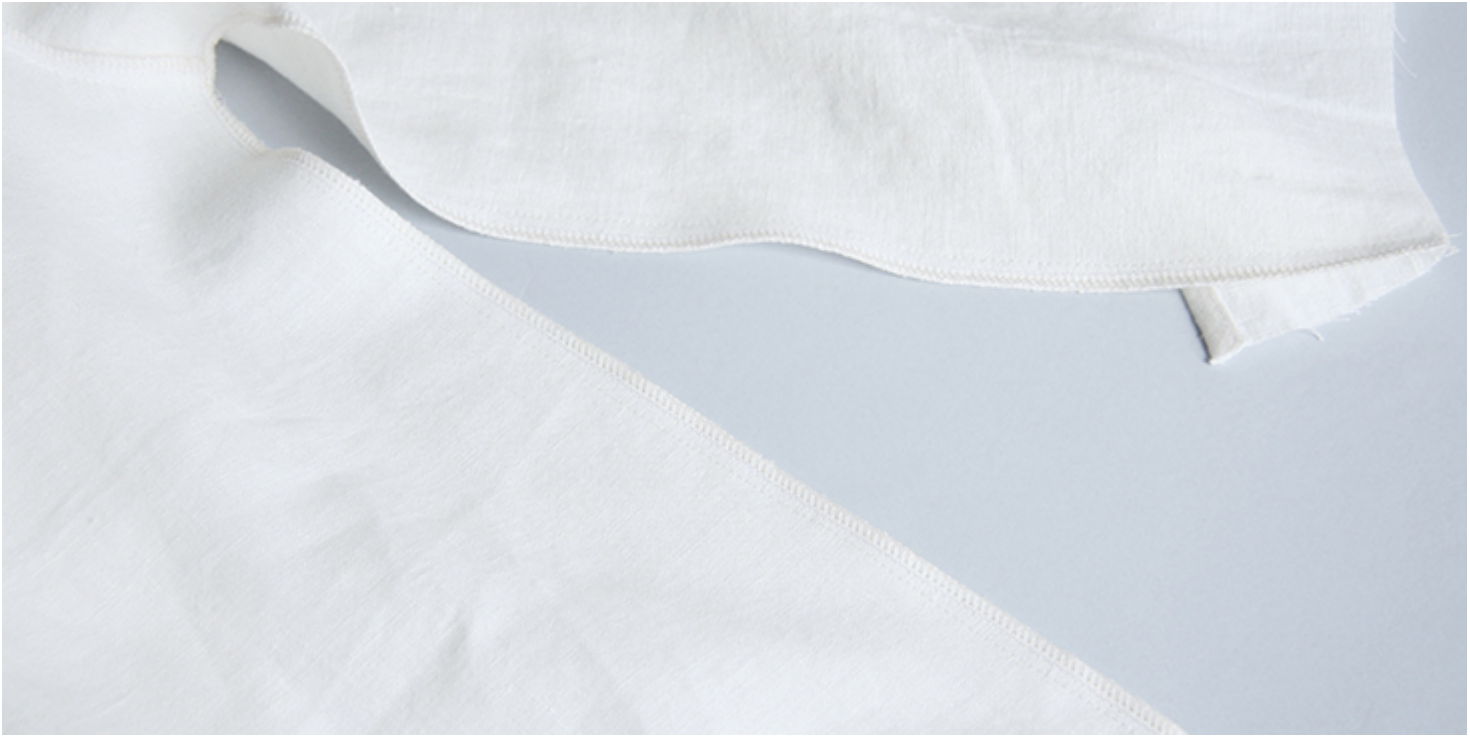
8. Pin sleeves to corresponding armholes right sides together and matching the notches. Pull basting threads to gather sleeve cap ease.



9. Stitch the sleeves to the bodice at a $\frac{3}{8}$ " (1 cm) seam allowance, remove basting stitches and finish the raw edges with a serger or a zigzag stitch. Press seam allowance towards the sleeve.



10. Pin the side seams and the underarms and stitch right sides together all in one seam. Grade and serge/zigzag the raw edges together. Press the seam allowances towards the back.



11. Following the same [tutorial](#), sew and attach the cuffs to each sleeve.



12. Lastly, sew the buttonholes and attach the buttons. Remember, that the buttonholes are sewn on the right button band and the tower side of the cuff, whereas the buttons – on the left side of the button band and the left side of the cuff.

For the buttonholes, you can follow our detailed tutorial [HERE](#). As for the buttons, check our tutorial [HERE](#) for instructions. Overlap the shirt and place a pin into the center of each buttonhole. This is where you'll need to attach the button.

The number and the spacing are really up to you. If you want your buttons closer, just leave smaller gaps between them. We decided to space our buttons 3" apart.



13. Give your shirt a good last press and you are all done!

A classic piece on its own, this simple white linen shirt also works well as a canvas for any number of cute embellishments. Add a contrasting pocket,

colored buttons or even customize it with some hand embroidery.

We love seeing what you make! Don't forget to share your pictures and tag your creations with #FabricsStoreNoaPattern hashtag.

Browse [our selection of linen fabrics](#) and find the fabric that inspires you for this project!

CATEGORY

1. FREE PATTERNS
2. TUTORIALS

Category

1. FREE PATTERNS
2. TUTORIALS

Date Created

May 21, 2019

Author

rima-khusainova